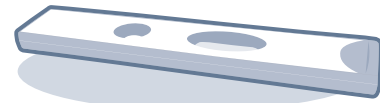


## Test Components



Test cartridge



Detector tube (Granule)



Detector diluent



ID chip

⚠ Ensure that the lot number of the components match.

**LOT Matches LOT**

🔑 If extraction buffer tube are stored in refrigerator, keep the sample collection tube at room temperature for 30 minutes just prior to the test.

Just right    Too little    Bubble in the middle

## Test Procedure

**1** Draw 150  $\mu$ L of Detector diluent.



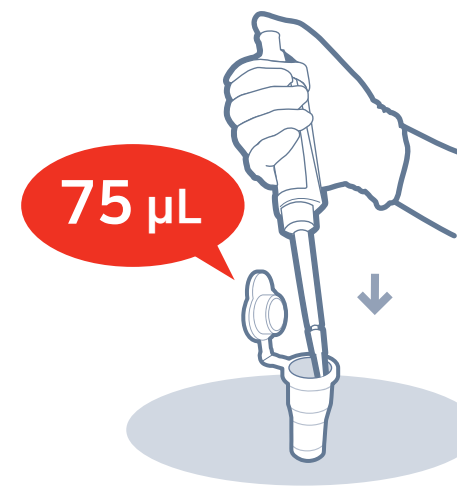
**2** Add it into Detector tube.



**3** Draw 75  $\mu$ L. (Whole blood/Serum/Plasma/Control)



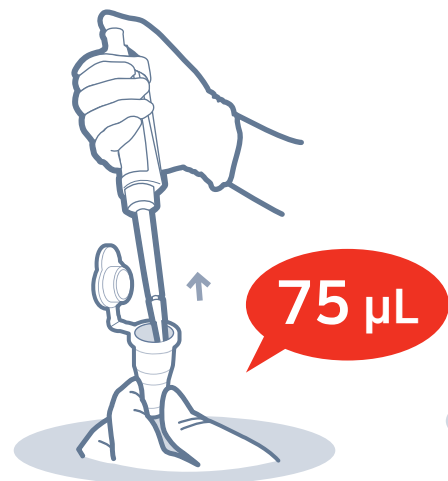
**4** Add it into Detector tube.



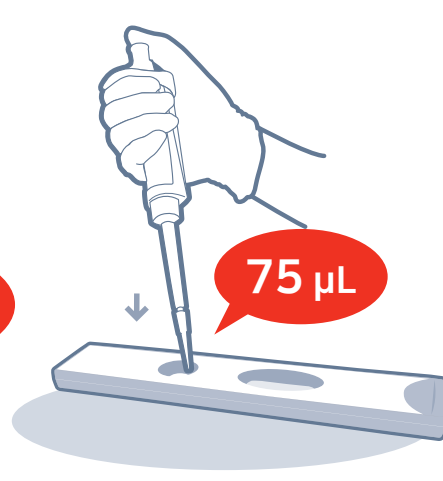
**5** Shake 20 times.



**6** Draw 75  $\mu$ L.



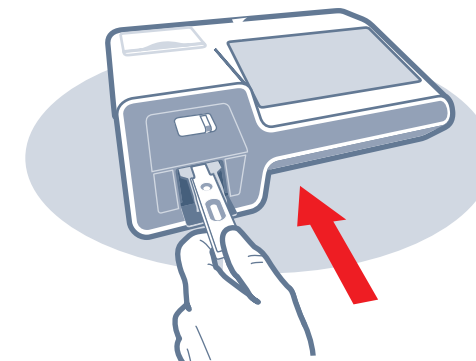
**7** Load the sample mixture.



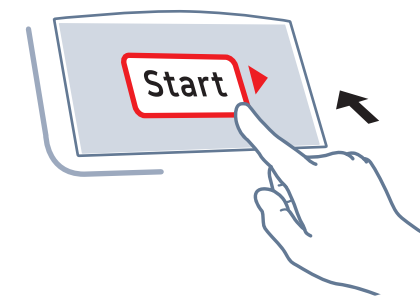
**8** Wait 12 minutes.



**9** Insert the test cartridge.



**10** Press 'Start'.



**11** Read the test result.

