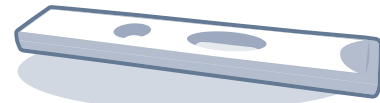


Test Components



Test cartridge



Detector tube (Granule)



Detector diluent



ID chip

Ensure that the lot number of the components match.

LOT Matches LOT

If extraction buffer tube are stored in refrigerator, keep the sample collection tube at room temperature for 30 minutes just prior to the test.

Just right

Too little or Bubble in the middle or near the top of the tip

Test Procedure

1 Draw 150 μ L of Detector diluent.



2 Add it into Detector tube.



3 Draw 10 μ L. (Whole blood/Serum/Plasma/Control)



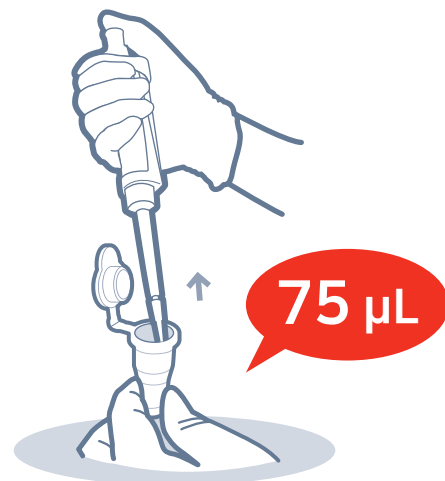
4 Add it into Detector tube.



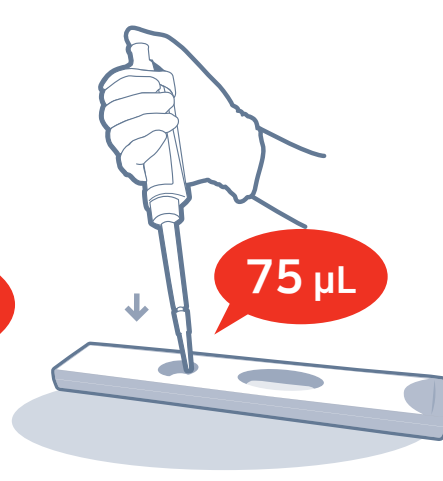
5 Shake 10 times.



6 Draw 75 μ L.



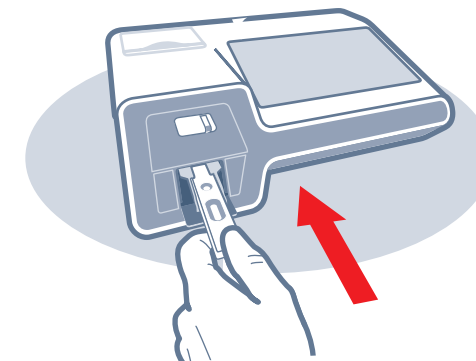
7 Load the sample mixture.



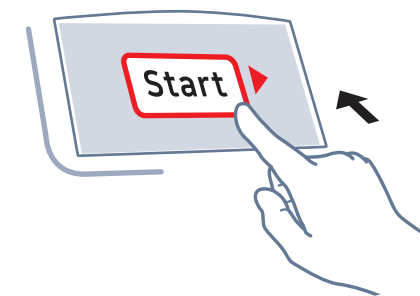
8 Wait 12 minutes.



9 Insert the test cartridge.



10 Press 'Start'.



11 Read the test result.

