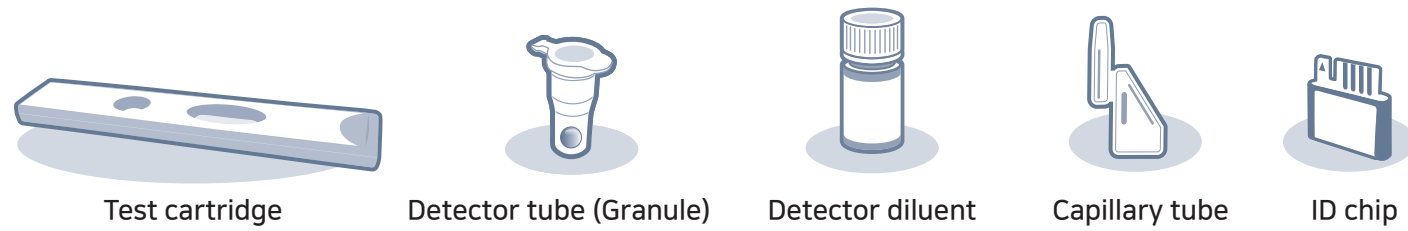


Test Components



Ensure that the lot number of the components match.

LOT Matches LOT

If extraction buffer tube are stored in refrigerator, keep the sample collection tube at room temperature for 30 minutes just prior to the test.

Test Procedure

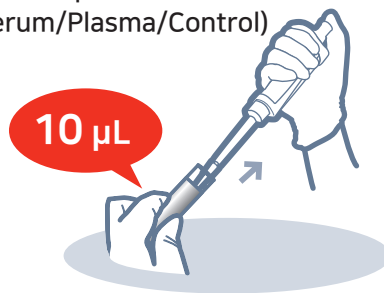
1 Draw 150 μ L. (Detector diluent)



2 Add it into detector tube. *Use immediately.



3 Draw 10 μ L. (Serum/Plasma/Control)



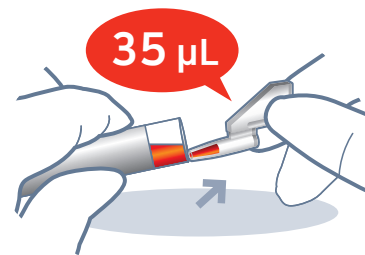
4 Add it into detector tube.



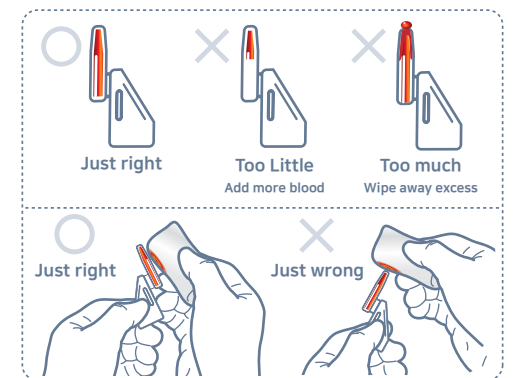
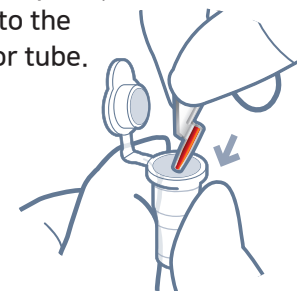
5 Shake 10 times.



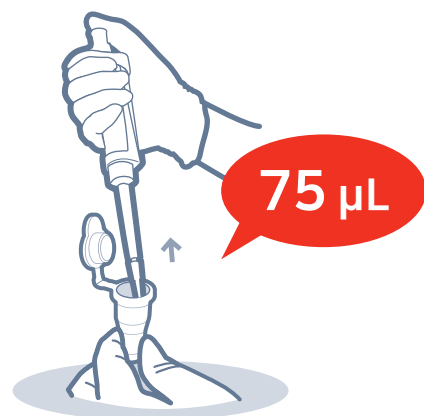
3 Draw 35 μ L. (whole blood)



4 Put the capillary tube into the detector tube.



6 Draw 75 μ L.



7 Load the sample mixture.

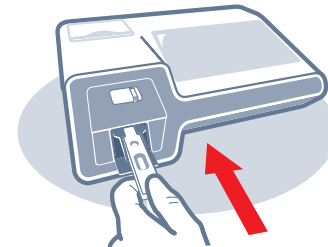


Multi mode

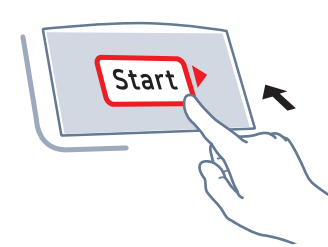
8 Wait 12 minutes.



9 Insert the test cartridge.



10 Tap 'Start'.

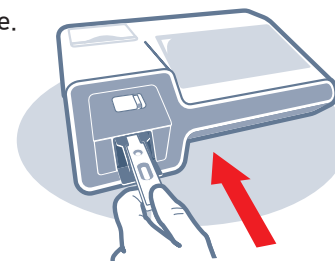


11 Read the test result.

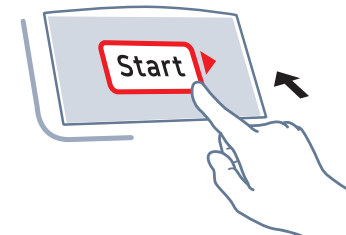


Single mode

8 Insert the test cartridge.



9 Tap 'Start'.



10 Automatically start scanning after 12 min and read result.

