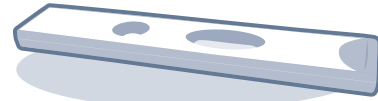


## Test Components



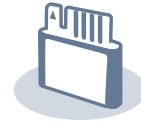
Test cartridge



Detector tube (Granule)



Detector diluent vial



ID chip

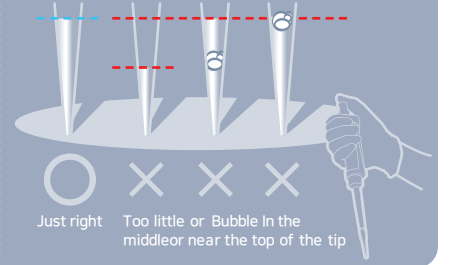


Ensure that the lot number of the components match.

**LOT** Matches **LOT**



If extraction buffer tube are stored in refrigerator, keep the sample collection tube at room temperature for 30 minutes just prior to the test.



## Test Procedure

**1** Draw 150  $\mu$ L (Detector diluent)



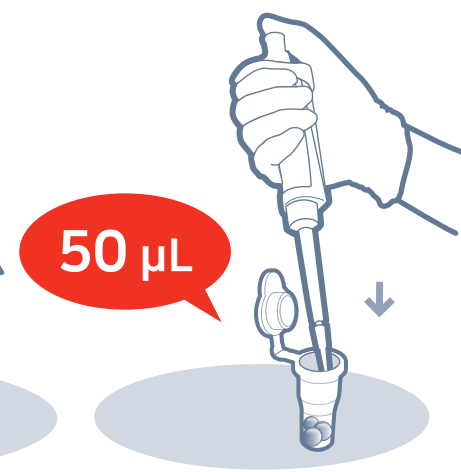
**2** Add it into detector tube \*Use within 1 minute



**3** Draw 50  $\mu$ L (Whole blood/Serum/Plasma/Control)



**4** Add it into detector tube



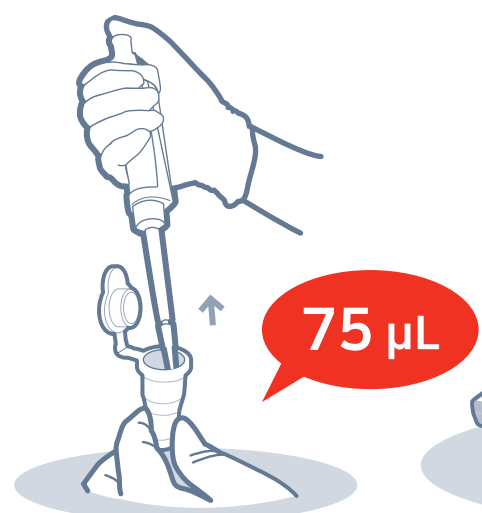
**5** Pipetting the mixture 10 times \*Use within 1 minute



**6** Shake 10 times



**7** Draw 75  $\mu$ L



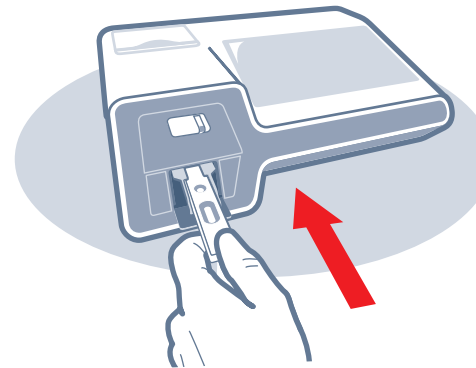
**8** Load the sample mixture



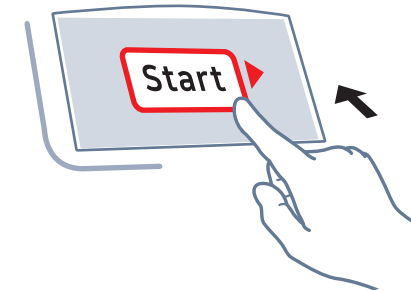
**9** Wait 12 minutes



**10** Insert the test cartridge



**11** Press 'Start'



**12** Read the test result

